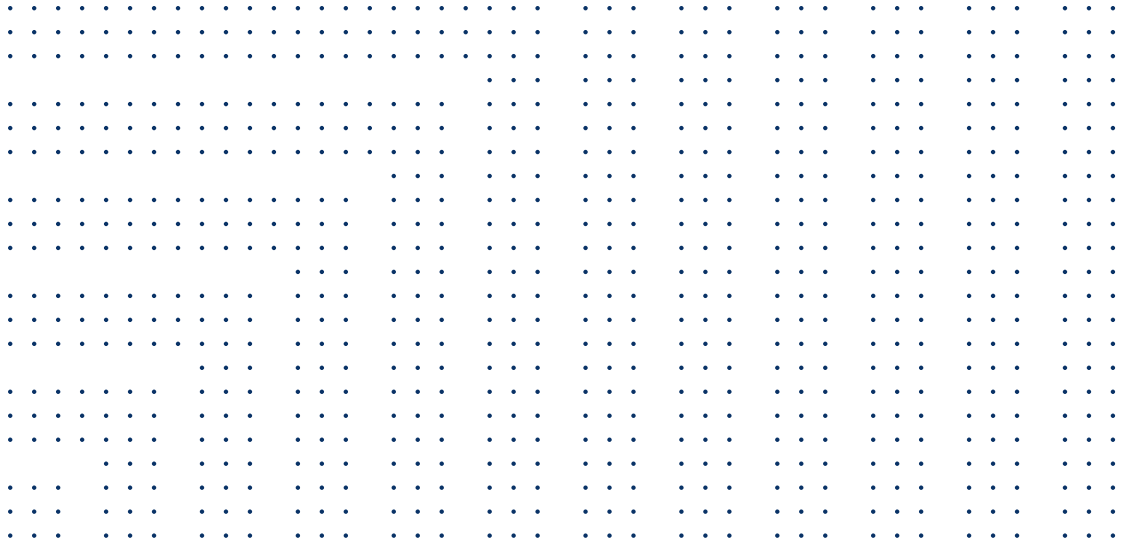




## Comprehensive unified security



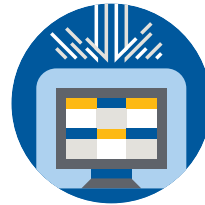
Genetec Security Center is a truly unified platform that blends IP video surveillance, access control, automatic license plate recognition, intrusion detection, and communications within one intuitive and modular solution. By taking advantage of a unified approach to security, your organization becomes more efficient, makes better decisions, and responds to situations and threats with greater confidence.

# Security Center benefits



## Unified security and operations

Through unification of core security systems such as Omnicast™ video management, Synergis™ access control, and AutoVu™ automatic license plate recognition (ALPR), you achieve greater operational efficiency and heightened awareness of your security environment.



## Reliable and cybersecurity

Have your system available whenever you need it. While built-in failover and redundancy work to safeguard system access and limit interruptions, advanced security mechanisms (encryption, authentication, authorization) protect privacy by preventing unauthorized access to sensitive data.



## A consistent experience

From system configuration and management, to live monitoring, reporting, and mobile access, operators enjoy the same, intuitive user experience across your entire security system. This makes it easier to train new operators as they only need to learn to work on a single platform.



## Flexible and scalable

Through its open architecture, you can enhance Security Center with Genetec modules and 3rd party add-ons that suit your business' changing needs. It seamlessly scales to hundreds of sites, and thousands of cameras, doors, intercom devices, and intrusion panels.



## Efficient deployment and maintenance

With a unified approach to security management, organizations experience real savings in deployment, maintenance, training, and day-to-day management of security. And, you avoid the compatibility issues typically faced with the integration of multiple independent products.



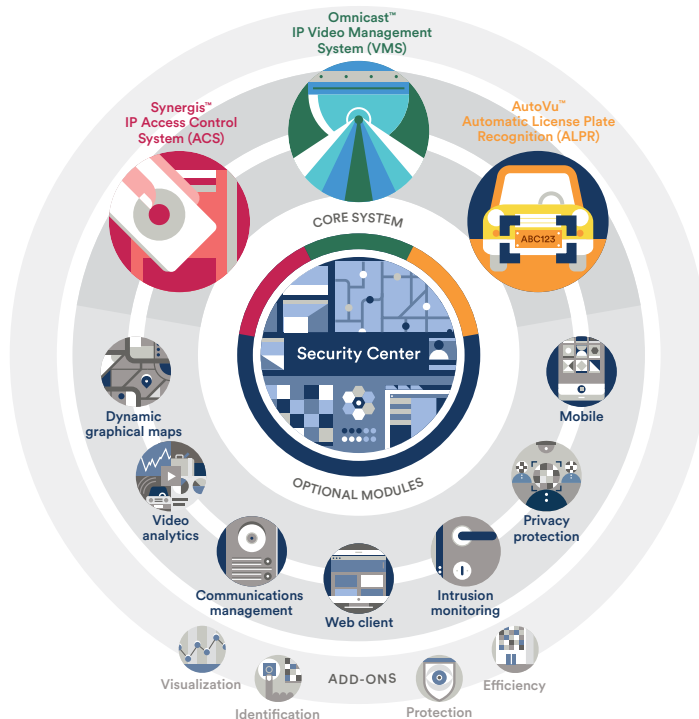
## A clear path to the cloud

Extend the capabilities of your on-premises installation and reduce IT infrastructure costs with our cloud services. With Security Center SaaS edition, cloud archives, automated updates and health monitoring, your organization becomes more agile and less dependent on hardware.

# A single platform that evolves with you

At the core of Security Center, you'll find Omnicast, Synergis, and AutoVu, our solutions for video management, access control, and automatic license plate recognition (ALPR). Through an open architecture approach, you further strengthen your security by tapping into a suite of core modules,

add-ons, and integrations with third-party security devices and systems. Unification not only provides greater awareness and control, but it also avoids the drawbacks of traditional security systems, such as limited connectivity between applications, compatibility issues, and complicated maintenance.



## Security Center core systems

With **Omnicast**, organizations of any size have the ability to deploy a video surveillance system adapted to their needs. Supporting a wide range of IP cameras, it addresses the growing demand for HD video and analytics, all the while protecting individual privacy.

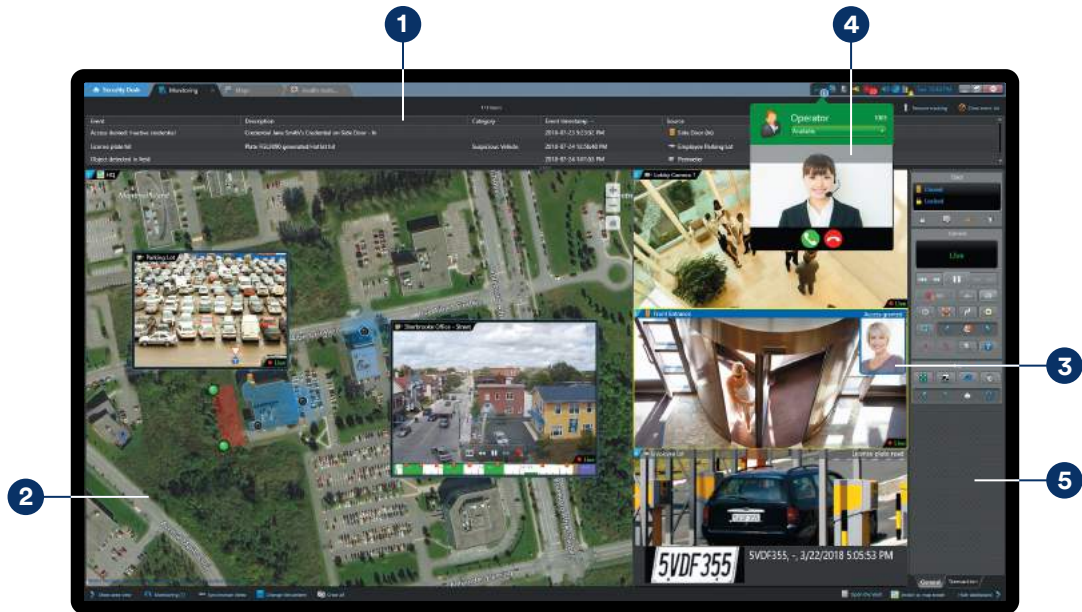
**Synergis** heightens your organization's physical security and increases your readiness to respond to threats. Supporting an ever-growing portfolio of 3rd party door control hardware and electronic locks, it allows you to leverage your existing investment in network and security equipment.

Deployed in both fixed and mobile installations, **AutoVu** automates license plate reading and identification. It allows you to extend your physical security into your parking lots and perimeter, so you are always aware of vehicles coming in and out of your facilities.

# A truly unified operator experience

Unlike integrated systems that simply connect a variety of security applications to share data, Security Center delivers an unparalleled unified operator and user experience. From a single monitoring application at their workstation or in a security operations control room, operators

view the entire security environment. And, with information correlated before their eyes, they benefit from greater awareness and operational insights. This improves their decision-making and reaction time, augmenting the safety of your people and organization.



## 1 Multi-task view

Perform monitoring and reporting tasks in multiple tabs so you can instantly go back to the previous operation at hand.

## 2 Interactive maps

Monitor your facilities with interactive maps that provide a dynamic view of all security cameras, doors, and alarms, with real-time events and status updates.

## 3 Live cardholder verification

With all door activities associated with surrounding cameras, you authenticate cardholder identity (picture) against live or recorded video.

## 4 Embedded call management

Place a video call to another operator, or answer an incoming call from an intercom station, directly in the Security Center interface.

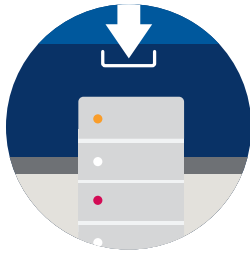
## 5 Dynamic dashboard

Take action through an adaptive dashboard that automatically displays commands and controls associated with the currently selected camera, door, or area.

# Flexible deployment options

There are several options for how and where you deploy Security Center.

**How you deploy.** At the moment, if you're only looking for a standalone access control or video system, you always have the flexibility to add video, access control, or ALPR capabilities at any time in the future without anything to re-install.



## Standalone

Deploy Security Center as a standalone access control, video management, or automatic license plate recognition solution. You can add core capabilities at your own pace, as it only requires a simple licensing change.



## Unified

Deploy Security Center as a unified platform and enjoy the benefits of unified security. Get greater situational awareness, enhanced security, and newfound operational efficiency across all your security and operations staff.

**Where you deploy.** If you're looking to move to the cloud, Security Center SaaS edition supports both Synergis and AutoVu hosted in the cloud. Should you only want to partially transition to the cloud, the solution lets you deploy some or all of your core components on-premises.



## Fully hosted

With nothing to deploy, Security Center SaaS Edition is hosted in the cloud\* and Genetec takes care of the software infrastructure.

\*Omnicast not supported as a hosted version



## Hybrid

In a hybrid deployment model, Synergis and/or AutoVu are hosted in the cloud, and connect to an on-premises Omnicast video system.

# Security Center key features

## Multi-site monitoring & management

Monitor real-time devices and information across all your security applications, and from both local and remote sites, within a single unified interface.

## Real-time map-based monitoring

Visualize your security environment with real-time dynamic maps. Navigate your facilities, monitor access control and ALPR events, view live or recorded video, and manage alarms, directly from your maps.

## Unified communications management

Extend your security with SIP-based communications. Manage incoming and outgoing calls with intercom devices and collaborate with colleagues through embedded audio and video calls.

## Consolidated, dynamic reporting

Streamline your investigations with unified custom reporting that you run across all your security systems and sites. Relying on graphs and dynamic charts, find insights to solve critical situations or simply improve your operations.

## Centralized alarm management

Centralize alarm management across all your security systems. Operators view alarms in real-time, respond, and acknowledge them whether they are triggered by the video, ACS, ALPR system, or from a 3rd party integrated solution.

## Centralized user management

Facilitate the management and synchronization of Windows user accounts with Security Center administrator and cardholder accounts. You not only automate security, but also streamline day-to-day administrative tasks.

## Failover and redundancy

Count on the availability of your security system, cameras and video recordings, and access to your doors whenever you need them. Built-in failover and redundancy mechanisms protect against hardware failure or network interruptions.

## End-to-end data security and privacy

Protect your video and data with secure communications between clients, servers, and edge devices (cameras, door controllers). Security Center encrypts video in transit or at rest, and when exporting evidence.

## Health monitoring

Receive real-time notification of system status and health-related events and generate statistics about the health of your system through a dedicated engine to help optimize system performance.

## Mobile and web apps

Deploy mobile and web apps to your personnel's devices so they stay connected at all times. View live and recorded video, control PTZ cameras, stream video from mobile devices, review access control events, unlock doors, and manage alarms on the go.

## Customizable dashboards

Achieve a comprehensive view into the events happening on your premises and your system. Dashboards combine data, charts, histograms and devices from your entire security environment, and let you build a unique experience tailored to your day to day.

# Comprehensive feature list

## Unified security platform

Fully embedded access control, video, and ALPR

Access to a wide ecosystem of IP devices and partner add-ons

Unified video analytics and privacy masking

High availability with built-in failover or 3rd party solutions

On-premises and cloud-based deployment options

Connected services (software and firmware updates, health monitoring)

## Architecture

IP-based security platform

Distributed, client-server, multi-site architecture

Compatible with 3rd party virtualization solutions

Software Development Kit (SDK), Web API, and tools

Embedded health monitoring and reporting engines

Microsoft Active Directory user synchronization

## Core modules

Real-time map-based monitoring (Plan Manager)

SIP-based communications (Sipelia™)

Unified security with intrusion panels

Unified video analytics and privacy protection (KiwiVision™)

Thin client for everyday operations  
(Security Center web client)

Unified mobile applications for smart devices  
(Genetec mobile)

## User experience and interface

Single task-based application for monitoring and reporting

Interactive map-based monitoring that supports geo-located maps, ArcGIS data and custom floor plans

Dynamic visual reporting with graphs, charts and histograms

Live dashboards combining reports, charts and live device data

## Federation™

View remote, independent sites as a single system

Multi-site and -system monitoring & reporting for video, ACS, intrusion, and more

Global cardholder management (GCM)

Manage and update remote site settings from the central location

Run centralized reports across locations

Consolidated alarm management

Backward/forward compatibility between sites

## Threat level management

Pre-define organizational threat levels and actions

Change behavior of system based on active threat level

Trigger actions across the platform, incl. video and ACS

Change entire security system or specific areas & doors

Lock doors, restrict access or go into a full lockdown

Control PTZ cameras, change recording settings

## Plan Manager (Dynamic Maps)

Real-time monitoring, command, and control on maps

View doors, cameras, intrusion panels, I/O zones

Live object and entity state changes

Real-time event viewing and alarm management

Operate doors, PTZ cameras, intrusion areas, intercoms

Connectivity over IP to GIS-based maps and ESRI maps

Vector (PDF) and raster (PNG, JPG), and KML import

ESRI ArcGIS maps support

## Cybersecurity and privacy protection

Cybersecurity score widget with hardening checklist

System partitioning to control what users can see

Extensive set of user-access privileges

End-to-end data, video, and communications encryption

Claims-based authentication and Active Directory Federation Services (ADFS) support

Camera firmware update notifications with firmware vault

Digital certificate support for Directory

Password strength meter

## Partner add-ons

Elevator dispatch & building automation

Perimeter and fence protection, radar, laser systems

Intrusion systems, gunshot detection

Parking systems

Biometrics and 3rd party access control systems

Video analytics, face recognition, forensics search

Asset management and tracking, ID scanning

# Security Center editions

## Ownership model – perpetual or subscription

Choose to own your system through a perpetual license, or begin your move to a subscription-based ownership model by deploying the SaaS edition of Security Center. Bring flexibility to your budget as you lower your upfront costs and only pay for what you use.

Editions	Standard	Pro	Enterprise	SaaS
<b>Security Center (included in base)</b>				
Client connections	5	5	5	5
Web client connections	5	5	5	5
Plan Manager basic	●	●	●	●
Alarm management	●	●	●	●
Advanced reporting	●	●	●	●
System partitioning	●	●	●	●
Entities (cams, readers, federated sites, intercoms)				16
Max. number of cameras	50	250	Unrestricted	●
Max. number of readers	64	256	Unrestricted	●
<b>Security Center optional features</b>				
Max client connections	5	10	Unrestricted	●
Mobile app connections	○	○	○	5 included
Sipelia comms management	○	○	○	○
Intrusion monitoring		○	○	○
Threat levels		○	○	●
Active Directory		○	○	●
Federation-as-a-Service				●
Federation*			○	●
Native archiver & directory failover			○	●

● Included or supported    ○ Optional    \*Federation host must be Enterprise. Federated sites can be Standard, Pro, or Enterprise.

**Genetec Inc.**  
[genetec.com/locations](http://genetec.com/locations)  
[info@genetec.com](mailto:info@genetec.com)  
[@genetec](https://twitter.com/genetec)

© 2019 Genetec Inc. All rights reserved. Genetec, Omnicast, Synergis, AutoVu, Sipelia, Federation and their respective logos are trademarks of Genetec Inc., and may be registered or pending registration in several jurisdictions. Other trademarks used in this document may be trademarks of the manufacturers or vendors of the respective products.