

Streamvault SV-100E

All-in-one security appliance

The Streamvault™ SV-100E all-in-one appliance is designed to help you secure remote sites quickly and easily. It allows you to deploy a Security Center unified security system with video surveillance and access control, and perform local monitoring and recording.

Guaranteed performance

up to
> **16**
cameras

up to
> **16**
readers

up to
> **16**
ALPR
cameras

up to
> **2TB**
storage



Key features

Turnkey appliance with Genetec™ Security Center pre-installed

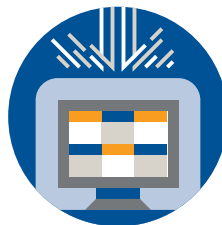
Local recording and monitoring of video, access control and other security events

3-year hardware warranty with 1-year advance replacement

Benefits



Fully unified – The Streamvault SV-100E unifies your security in a single compact appliance. This allows you to record video and monitor entries and exists without deploying multiple devices.



Protect your security system – Streamvault appliances help you build a resilient security system that protects your data and operations. Our cyber security experts stay vigilant on evolving threats and help identify and address new vulnerabilities promptly.



Versatile format – Whether you are looking to deploy a system at a single site, or centralize monitoring across hundreds of remote sites, the SV-100E provides a standardized solution that can be quickly deployed anywhere.

Applications

Retail

Centralize security across your remote stores with the Streamvault SV-100E. Its compact size, energy efficiency and all-in-one capabilities allow you to standardize your processes across your entire chain.

Banking

Secure small service points and unify video with access control to and POS to boost your team's efficiency. The SV-100E Series' small size makes it perfect for location where space is at a premium.

Law enforcement

Implement a digital recording system for interviewing suspects with our Interview Room application. This turnkey solution increases your agency's efficiency when solving crimes.

Technical specifications

OS

Windows 10 IoT Enterprise LTSC

Processor

Intel® Core™ i3

Memory

8 GB DDR4

Ethernet

On-board 1Gb network adapter

Peripherals

4x USB 3.1

2x USB 2.0

Display

1x HDMI

1x DisplayPort

Mechanical and environmental

Power supply

65W

BTU

222 BTU/hr

Operating temperature

50°F to 95°F (10°C to 35°C)

Operating humidity

5 - 90% (non-condensing)

Dimensions

1.4" x 7.0" x 7.2" (36 mm x 178 mm x 182 mm)

Weight

2.6 lbs (1.2 kg)

Certifications

IEC 60950-1, European Norm EN 60950-1, CISPR 22/CISPR 24, EN55022/55024

Storage

Drive type

2.5" SATA drive

OS drive

1x 256 GB M.2 SSD

Maximum data storage

2 TB (raw); 1.7 TB (usable)

Warranty

Hardware

3-year warranty with 1-year advance replacement and next business day on-site service

