

# Streamvault SV-1000E

## Turnkey security appliance

The Streamvault™ SV-1000E appliance is a cost-effective rackmount solution designed for mid-sized security systems. It helps you move to a unified security system combining video surveillance, access control, automatic license plate recognition, communications, intrusion and analytics in a single appliance.

### Guaranteed performance

up to **> 570 Mbps** total throughput

up to **> 2000** readers

up to **> 75** ALPR cameras

up to **> 96 TB** storage



## Key features

Turnkey appliance with Genetec™ Security Center pre-installed

Video surveillance-grade SATA storage with RAID 5 configuration

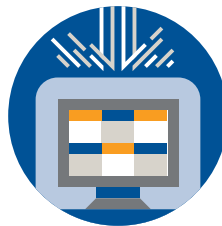
Machine learning endpoint protection

3-year hardware warranty with next business day on-site service and hard drive retention

## Benefits



**Get up and running faster** – The SV-1000E appliance accelerates new system deployment. With Security Center pre-loaded and guaranteed performance, you can move to unified security faster.



**Protect your security system** – Streamvault appliances help you build a resilient security system that protects your data and operations. Our cyber security experts stay vigilant on evolving threats and help identify and address new vulnerabilities promptly.



**Simplified maintenance** – The SV-1000E is delivered with built-in tools to monitor system health and simplify updates. It reduces service calls and makes it easy to take full advantage of the latest Security Center capabilities.

## Applications

### Retail

The SV-1000E lets you unify your video surveillance with point-of-sale systems, and provides a standardized turnkey solution for repeatable deployment across locations.

### Education

Combine video surveillance, access control and intercoms in a single device with the SV-1000E. And with Security Center Mobile pre-loaded, you can access your cameras from anywhere.

### Corporate security

Monitor entries and exits and review video surveillance videos from the same interface. The SV-1000E is the perfect security appliance for office environments, allowing you to efficiently protect staff, visitors and assets.

## Technical specifications

### OS

Windows Server Essentials 2019

### Processor

SV-1020E-R3:  
1x Intel® Xeon® E-2244G  
Passmark: 9826

### SV-1020E-R6:

1x Intel® Xeon® Silver 4208 2.10GHz  
Passmark: 13867

### Memory

16 GB DDR4

### Ethernet

SV-1020E-R3: 2x 1GbE  
SV-1020E-R6: 2x 1GbE

### Peripherals

SV-1020E-R3: 1x USB 2.0 + 2x USB 3.0  
SV-1020E-R6: 2x USB 2.0 + 2x USB 3.0

### Video output

SV-1020E-R3: 1x VGA  
SV-1020E-R6: 1x VGA

### Performance

Recording throughput: 400 Mbps  
Playback throughput: 20 Mbps  
Redirection throughput: 150 Mbps

## Mechanical and environmental

### Operating temperature

50°F to 95°F (10°C to 35°C)

### Operating humidity

5 - 90% (non-condensing)

### Compliance standards

Regulatory IEC 60950-1, European  
Norm EN 60950-1, CISPR 22/CISPR 24,  
EN55022/55024

## Cybersecurity

### Endpoint protection

BlackBerry Protect machine learning  
antivirus

### Hardened image

200+ security settings changed by default

### Maintenance

Verified Windows updates  
Connected services for Genetec software  
and device firmware updates

## Storage

### Drive type

Hot-swap 3.5" SATA drives

### OS drive

SV-1020E-R3:  
1x 480GB SSD

### SV-1020E-R6:

2x 480GB SSD (RAID 1)

### Available drive sizes

4TB, 8TB, 12TB, 16TB SATA

### RAID controller

SV-1020E-R3:  
PERC H730P (2GB NV Cache)  
SV-1020E-R6:  
PERC H750 (8GB NV Cache)

### Data RAID level

RAID 5; RAID 6 & 10 available as options

### Maximum data storage

96 TB (raw); 72 TB (usable)

## Warranty and support

### Hardware warranty

3-year warranty with next business day  
on-site service and Keep Your Hard Drive

### Security Center support

Current and two previous versions (N-2)

## Models

Model	Form factor	Bays	Dimensions (W x D x H)	Max weight	Power (100-240v)
SV-1020E-R3	1U	4 (3 archive drives)	19" x 23.98" x 1.7" (482mm x 609mm x 43mm)	26.89 lb (12.2 kg)	1x 450W
SV-1020E-R6	2U	8 (6 archive drives)	19" x 28.25" x 3.4" (482mm x 717mm x 87mm)	65.43 lb (29.68 kg)	2x 495W

\*Hardware specifications are subject to change. Units provided will be equivalent or superior to what is shown in this document.

### Genetec Inc.

genetec.com/locations  
info@genetec.com  
@genetec