

# Streamvault SVS-7000E NAS

## Scale-out NAS

Designed for applications combining large amounts of high resolution cameras, users and events, the SVS-7000E is a scale-out network attached storage (NAS) that scales with your needs. With server-side load balancing and expandable storage, your system can scale seamlessly.

### Guaranteed performance

up to  
> **1,800**  
Mbps per 4U  
chassis

up to  
> **1,280 TB**  
raw storage,  
816TB usable



### Key features

Resilient appliance with zero downtime during expansion

Built on Dell EMC Isilon platform

No single point of failure

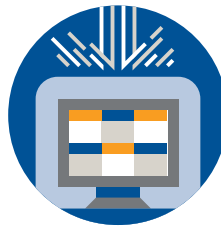
Cyber hardened

Scales out to 58PB per cluster

## Benefits



**Reduce your infrastructure footprint** – Connect more devices per appliance and reduce the number of units you need to manage your unified security system.



**Protect your security system** – Streamvault appliances help you build a resilient security system that protects your data and operations. Our cyber security experts stay vigilant on evolving threats and help identify and address new vulnerabilities promptly.



**Deploy and expand seamlessly** – Combining high performance and network attached storage, the Streamvault Series is designed to scale with your needs.

## Applications

### Transportation

The Streamvault 7000E Series delivers a unified system combining video, access control, intrusion and video analytics, so you can secure your entire airport or seaport efficiently.

### Gaming

Record high-resolution footage from hundreds of cameras simultaneously and reduce your infrastructure footprint with the Streamvault 7000E Series.

### Entertainment venues

Record and access high-resolution video instantly and resolve incidents without disrupting ongoing activities with the Streamvault 7000E Series.

## Technical specifications

### OS

OneFS

### Memory

64GB ECC per chassis  
(16GB ECC per Node)

### Ethernet

4x 1GbE RJ45  
4x 10GbE SFP+

## Storage

### Drive type

3.5" SATA Drives

### OS drive

N/A

### Maximum data storage (usable)

4896TB usable (204TB/node)

## Mechanical and environmental

### Power supply

4x 1100W (1 per node, 4 per chassis)  
(90-130VAC / 180-264 VAC)

### BTU

3600 BTU/hr

### Operating temperature

50°F to 95°F (10°C to 35°C)

### Operating humidity

5 - 90%

### Dimensions

17.6" × 42.2" × 7.0"  
(448mm × 1026mm × 178mm)

### Weight

Up to 285 lbs (129.3 kg)

### Certifications

FCC Part 15, CISPR22/CISPR24, EN55022/  
EN55024, EMC Compliant Class A, IEC  
60950-1, EN 60951-1, EU RoHS Directive  
2011/65-EU

## Cybersecurity

### Hardened image

200+ security settings changed by default

### Maintenance

Verified Windows updates  
Connected services for Genetec software  
and device firmware updates

## Warranty and support

### Hardware warranty

5-year warranty with next business day  
on-site service  
All SVS-7010E-NAS units include  
scheduled on-site deployment service

### Security Center support

Current and two previous versions (N-2)



### Genetec Inc.

genetec.com/locations  
info@genetec.com  
@genetec

\* Hardware specifications are subject to change. Units provided will be equivalent or superior to what is shown in this document.

© Genetec Inc., 2022. Genetec, Streamvault and the Genetec Logo are trademarks of Genetec Inc., and may be registered or pending registration in several jurisdictions. Other trademarks used in this document may be trademarks of the manufacturers or vendors of the respective products.